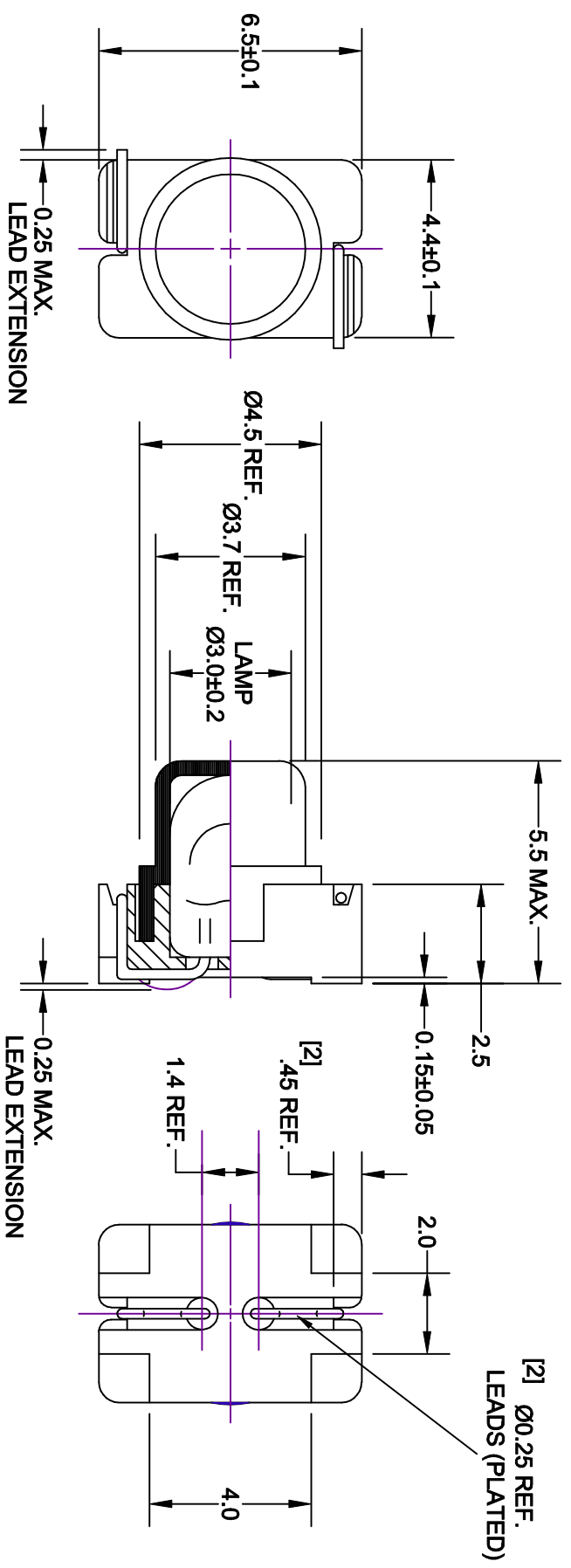
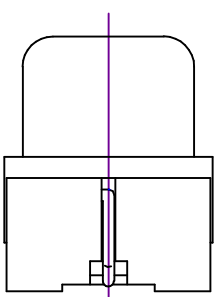


RECOMMENDED DIMENSIONS
FOR PC-BOARD PAD

REV.	DESCRIPTION/ECO NO.	DATE
	RELEASED - was P-9911-14-2 and	11/23/99
	FILTER 39-26-150	
A	CHANGE LEAD CUTAWAY PROFILE	11/29/99
B	ADD NOTE & DIM CHNGS.	1/25/00
C	DELETE NOTE	11/28/00



LAMP NUMBER: 7152					
VOLTS RATED	AMPS ± 10%	*MSCP ± 25%	*LUMENS ± 25%	AVERAGE LIFE HRS.	FILAMENT TYPE
5.0	.115	.150	1.89	20,000**	C-2R

*LAMP RATING ONLY WITHOUT BASE AND FILTER

**DERIVED FROM ACCELERATED TESTING

FILTER NUMBER: 39-26-1A	
COLOR REF.	COORDINATES
RED	X = 0.6920 ± .025
PONTIAC	Y = 0.3036 ± .025

JKL PART NUMBER: CSD4-7152/39-26-1A

	METRIC	DIMENSIONS ARE IN MILLIMETERS		
		TOLERANCE UNLESS OTHERWISE SPECIFIED	1 PL +.02	2 PL +.020
	ANGLE +.0		APPR'D BY JK	DATE 11/28/00
DRAWN BY L. WENGSTROM		SCALE	SIZE	REV. C
MANUAL REVISIONS NOT PERMITTED		NONE	A	55335
- CAD DRAWING -		RELEASED DATE 11/29/99	DRAWING NO. CSD4-7152/39-26-1A	
		REVISION DATE 11/28/00		
		SHEET 1	OF 1	

JKL COMPONENTS CORPORATION

T-1 SURFACE MOUNT LAMP WITH
BASE AND FILTER (LOW PROFILE)